

Residential, Commercial Recreational, Inspirational

This an opportunity for growth and renewal for not just the Somass Lands, but the railway, harbour and 3rd Avenue areas.



Renewed commercial (red), condominium, business, accommodation, and mixed use along Tye Landing, lower Dunbar, 3rd, and Redford.

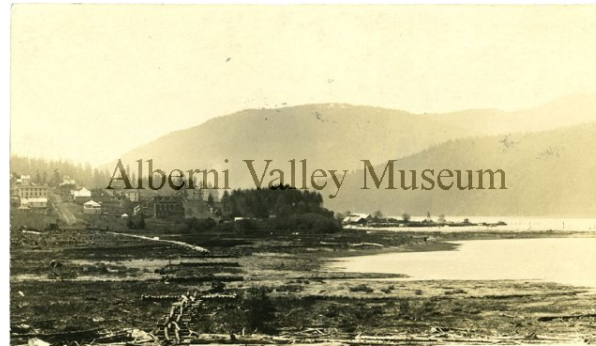


Salmon and Wetland

Owatchet (Dry) Creek Estuary nurtures salmon, birds, and wildlife with the rest of the Somass Estuary. We would like that to return.

Who are we?

Dry Creek Restoration Group is under the umbrella of Alberni Valley Transition Town Society which supports environmental and climate related efforts.



Reconciliation through Restoration

Before the towns of Port Alberni and Alberni were settled, First Nations inhabited these lands including around the Owatchet (Dry) Creek Estuary. We want to work with Tseshaht and Hupacasath to ensure this is done in a way that honours, respects, and restores some of what was lost while providing opportunity for the future.



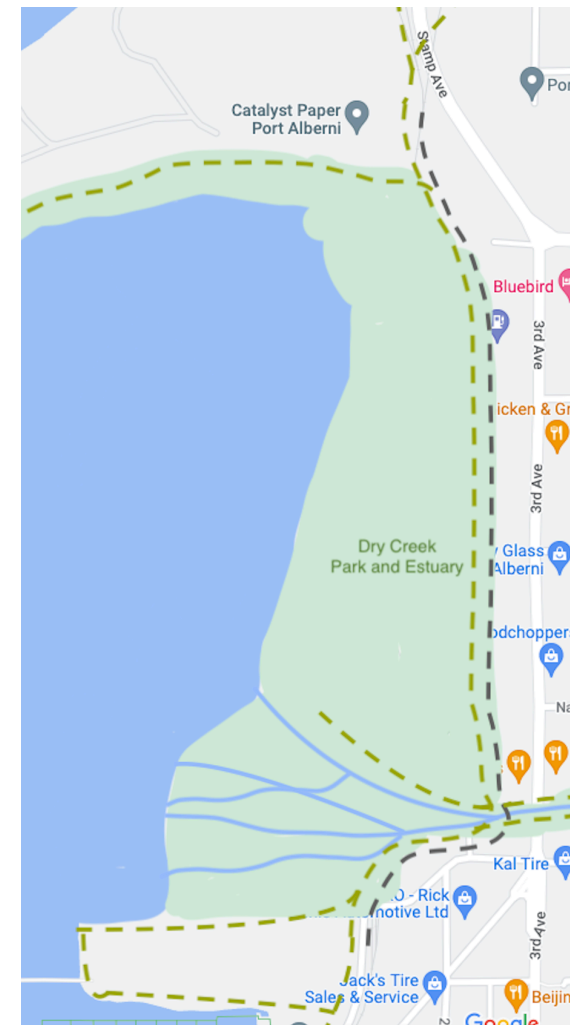
(Re)-Development working with the City

While we might have a different or expanded overall vision, the goal is the same: to create a space that nurtures, benefits and supports residents and businesses alike.

Dry Creek Restoration Group

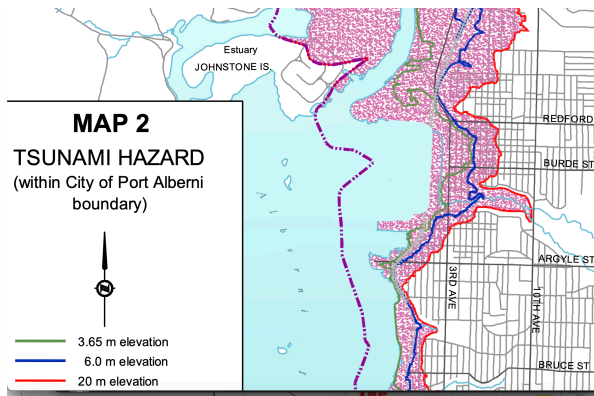
We are a group in Port Alberni dedicated to fully restoring Dry Creek Estuary by rejuvenating the Somass Lands and other City owned land to their original habitat. Scan the QR codes for more.

www.avtransitiontown.org



Climate Change and Tsunami Preparedness.

Sea level rise, earthquakes, extreme weather, flooding, and tsunamis are all things that can and have impacted the Somass Estuary and other low lying areas. Restoring the natural marsh and pulling the shoreline back toward higher ground will help create a barrier to protect our community and investments.



The map above has been modified to estimate the new shoreline

Dry Creek Restoration Group - part of AVTTS.



AVTTS Public Meetings: 3rd Wednesday of the Month - 6PM at Char's Landing
 Questions or would like to know more about this project?
 Email: avtransitiontown@gmail.com
 Mailing List: restoredrycreek@googlegroups.com
 Website: avtransitiontown.org/restoredrycreek

The Possibilities

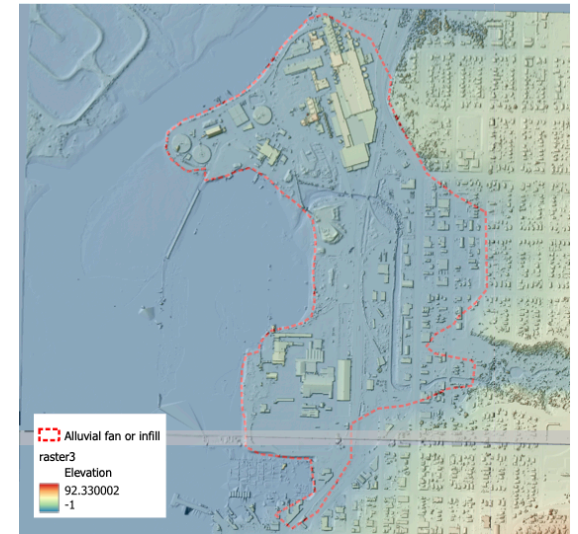
An example of cooperation and restoration. The Nanaimo Estuary restored from coal and other industrial uses.



The foundation of the idea is the restoration of the original course of Owatchet (Dry) Creek. Could this be the view from Smitty's Restaurant?

Would this enable and encourage further redevelopment of the 3rd and 4th Avenue area?

History and Technology



Modern technology, and ancient knowledge can combine to restore potentially contaminated infill and move the creek away from remaining industrial land and Catalyst Paper. Significant funding and experience exists to accomplish this. Affordable housing, parkland, commercial and industrial space can coexist.



Dry Creek could be our False Creek. Did you know Harbour Quay was designed by the same person that designed Granville Island?